

A wide-angle photograph of a riverine landscape at dusk or dawn. The sky is a pale, hazy blue-grey, filled with numerous Whooping cranes in flight. In the foreground, a wide, flat expanse of water reflects the light. A large flock of cranes is gathered on a distant, low-lying island or peninsula. In the immediate foreground, a small group of cranes, including one with a distinctive brown and white pattern, are wading in the water. The background features a line of trees and distant hills under the soft light of the sky.

# Whooping Crane Riverine Roost Site Selection Update

Patrick Farrell

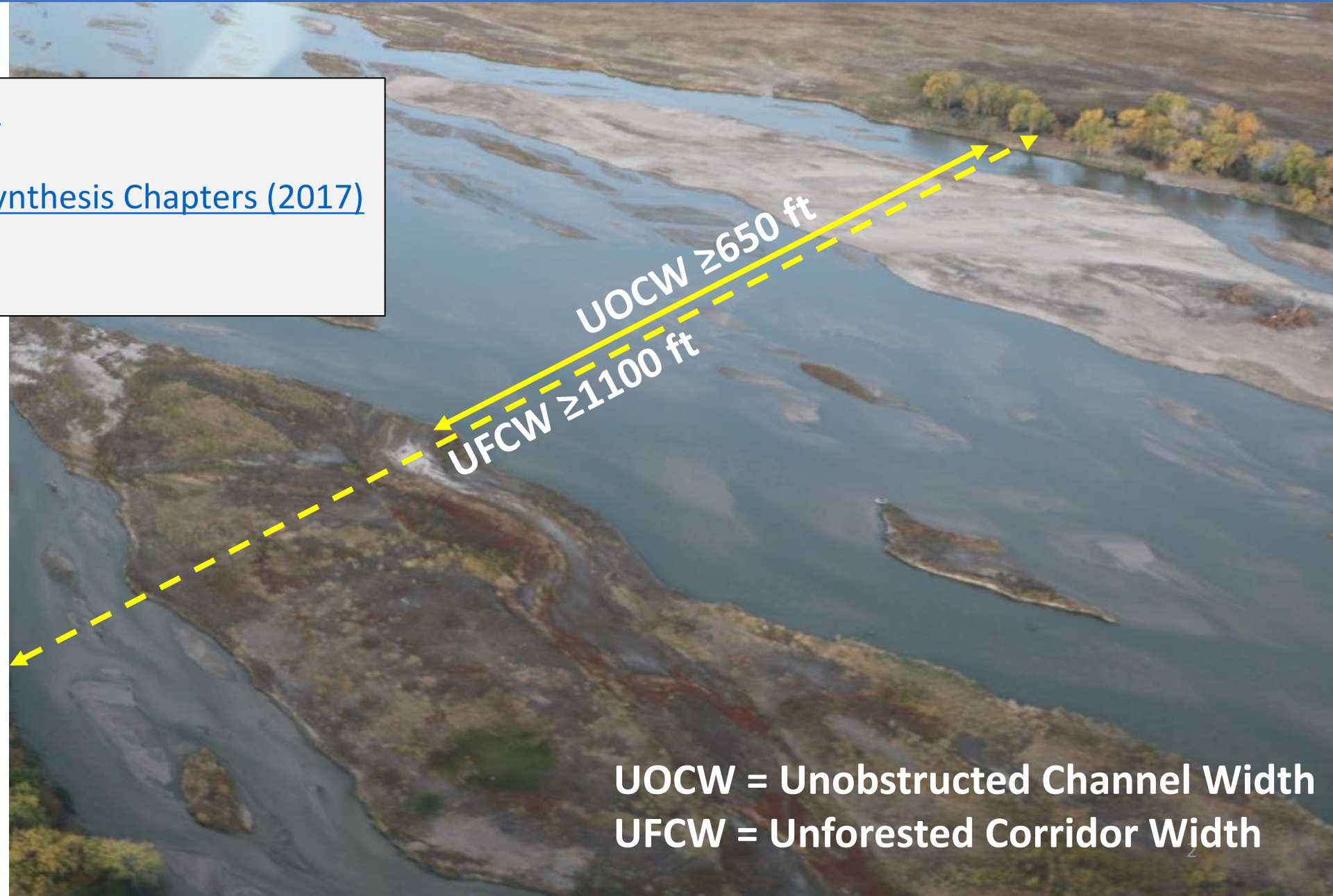
March 2024 Governance Committee Meeting

# Highly Suitable Roosting Habitat - Criteria

[Howlin and Nasman \(2017\)](#)

[Whooping Crane Habitat Synthesis Chapters \(2017\)](#)

[Baasch et al. \(2019\)](#)



UOCW = Unobstructed Channel Width  
UFCW = Unforested Corridor Width



# Highly Suitable Roosting Habitat - Management



# Objective

- Provide additional information for defining suitable roosting habitat.
- Results will guide Program management to:
  - **Continue** current land and water management
  - **Adjust** criteria for existing characteristics and/or include new characteristics



# Aerial Surveys (Spring 2001 – Spring 2022)



163 Crane Groups

442 Total Roosts



**PLATTE RIVER**  
RECOVERY IMPLEMENTATION PROGRAM

# On-Channel Characteristics

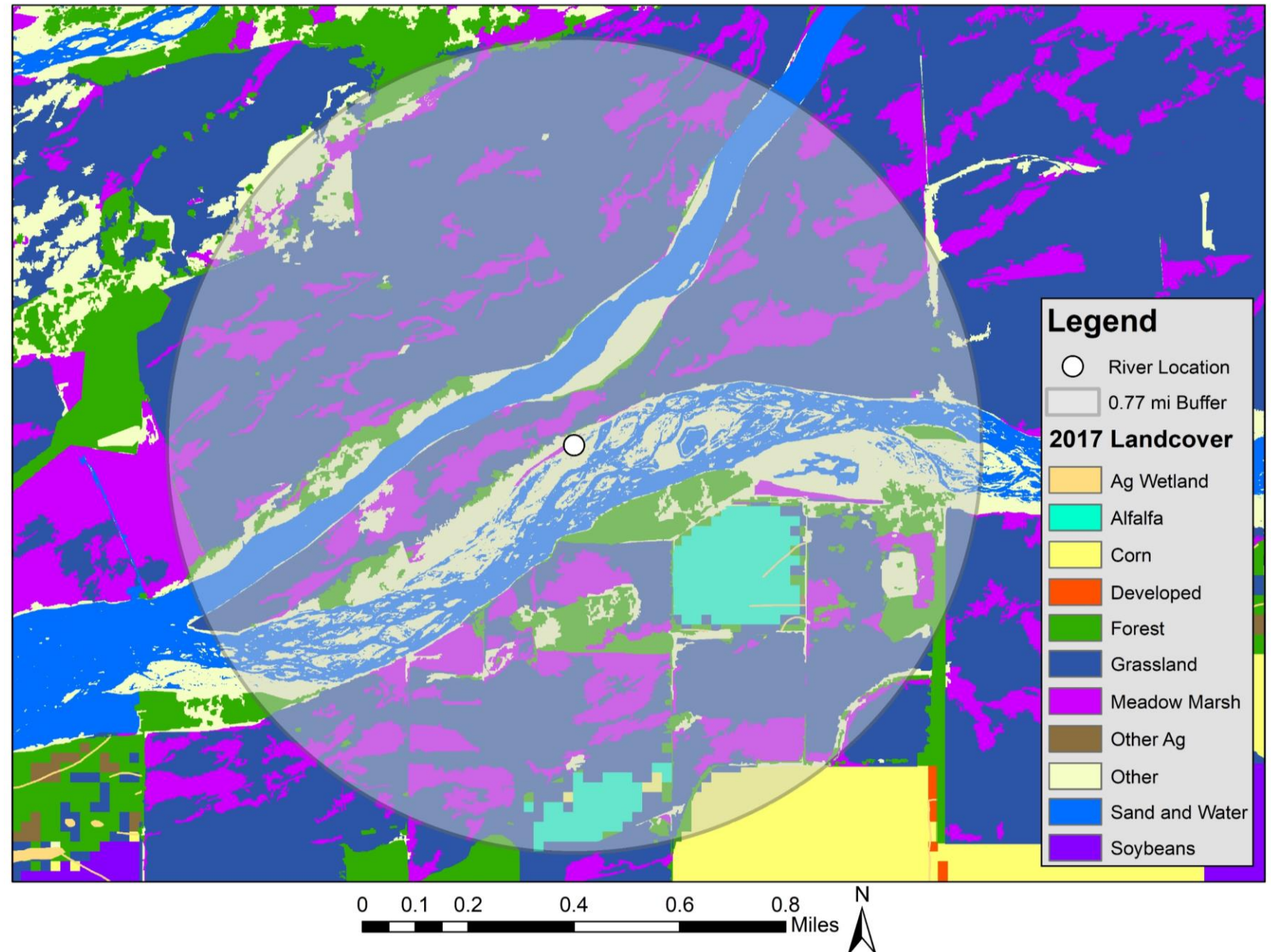
- Unobstructed Channel Width (UOCW)
- Nearest Forest (NF)
- Total Channel Width





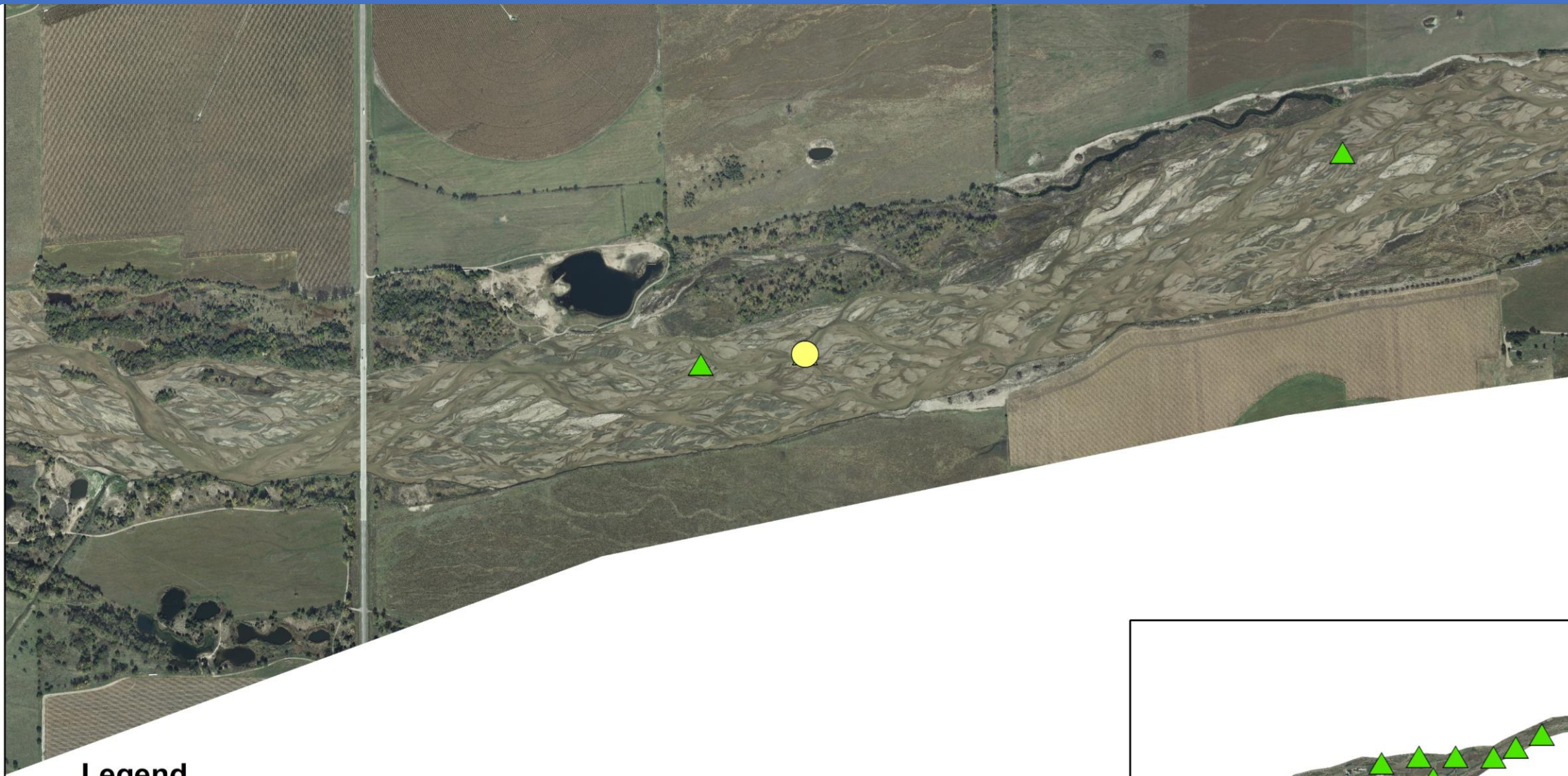
# Surrounding Landscape Characteristics

- Sand and Water
- Grasslands
- Meadow Marsh
- Ag Wetlands
- Development
- Corn



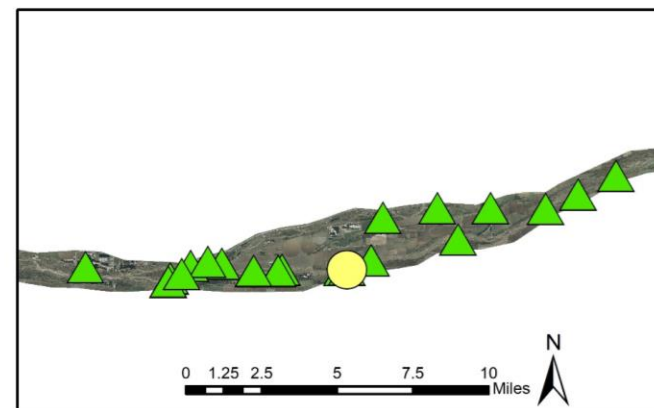
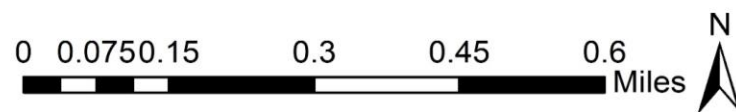


# Roosts and Available Locations



## Legend

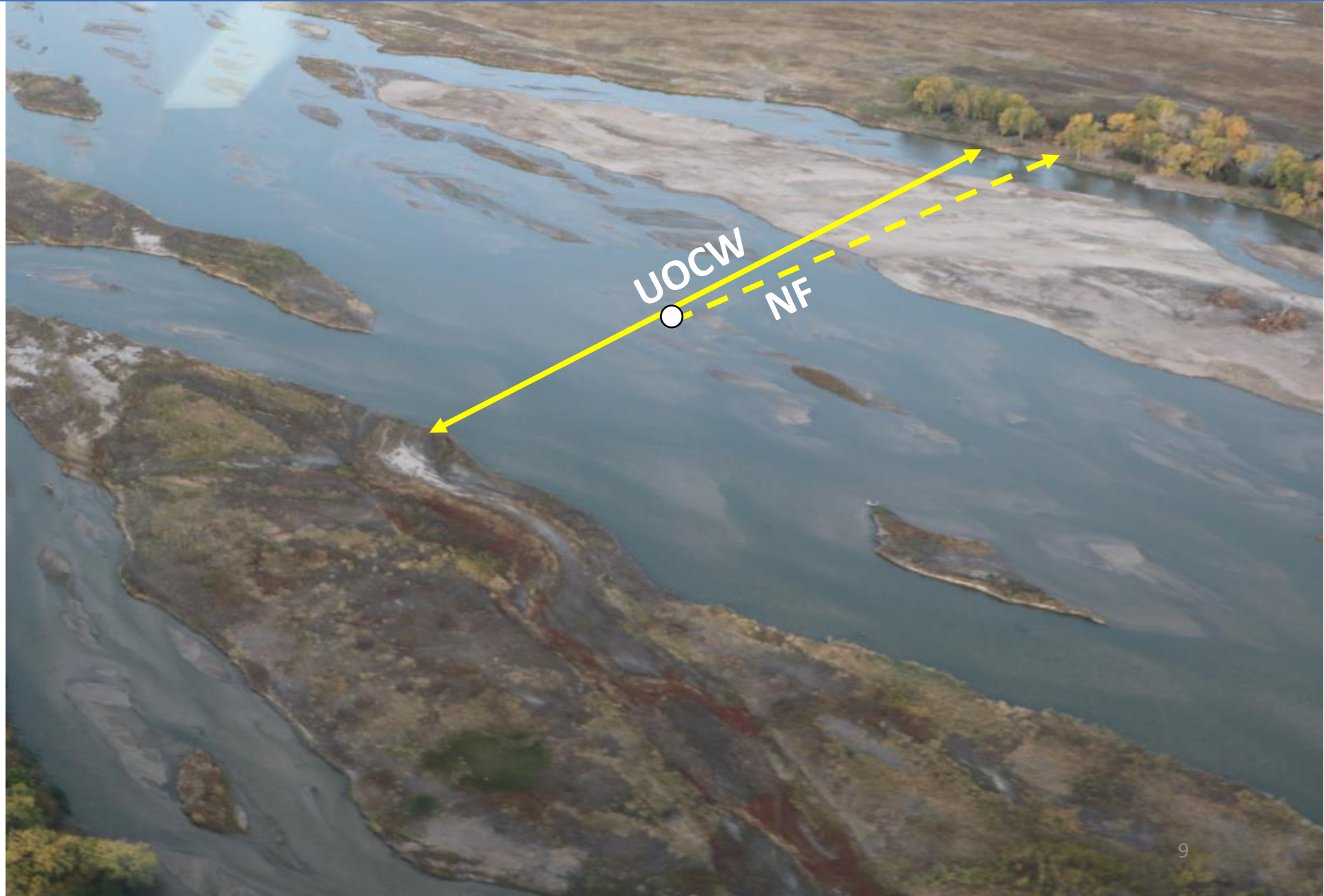
-  Fall 2017 Use Location (ID = 2041)
-  Available Locations (ID = 2041)



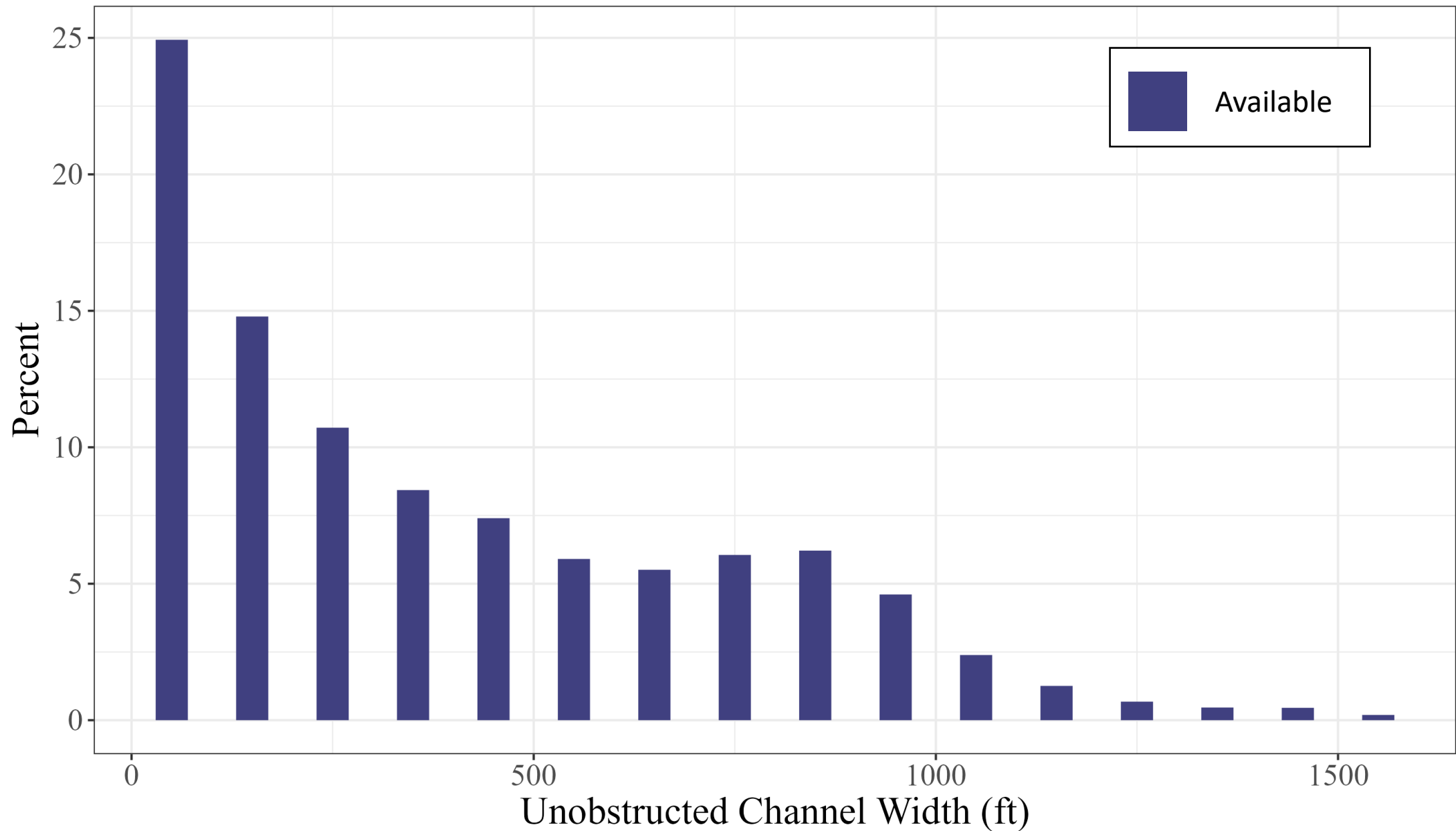


# Results: Important for Roost Site Selection

- Unobstructed Channel Width (UOCW)
- Nearest Forest (NF)
- Development

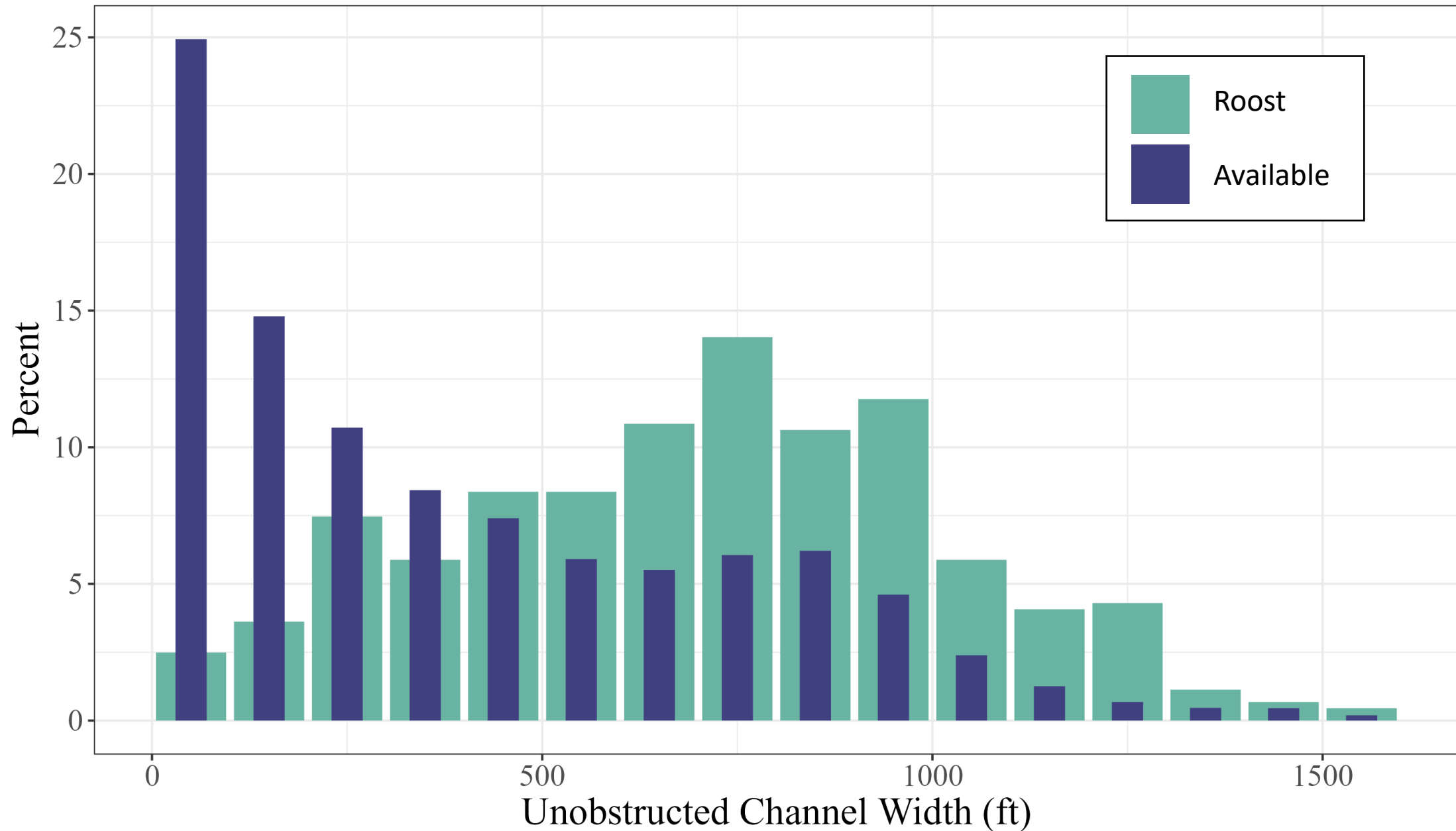


# UOCW Roosts vs. Available Locations

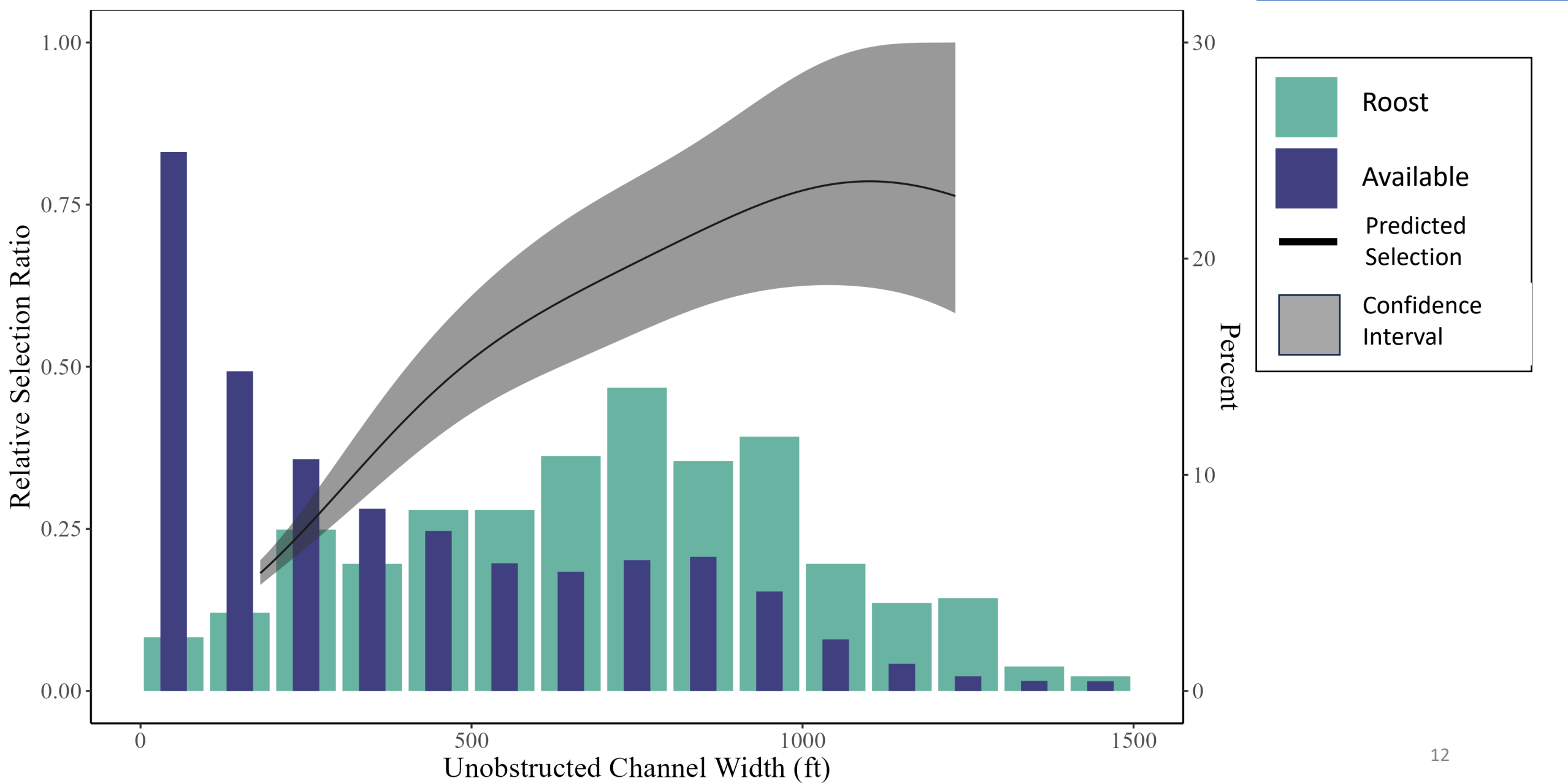




# UOCW Roosts vs. Available Locations

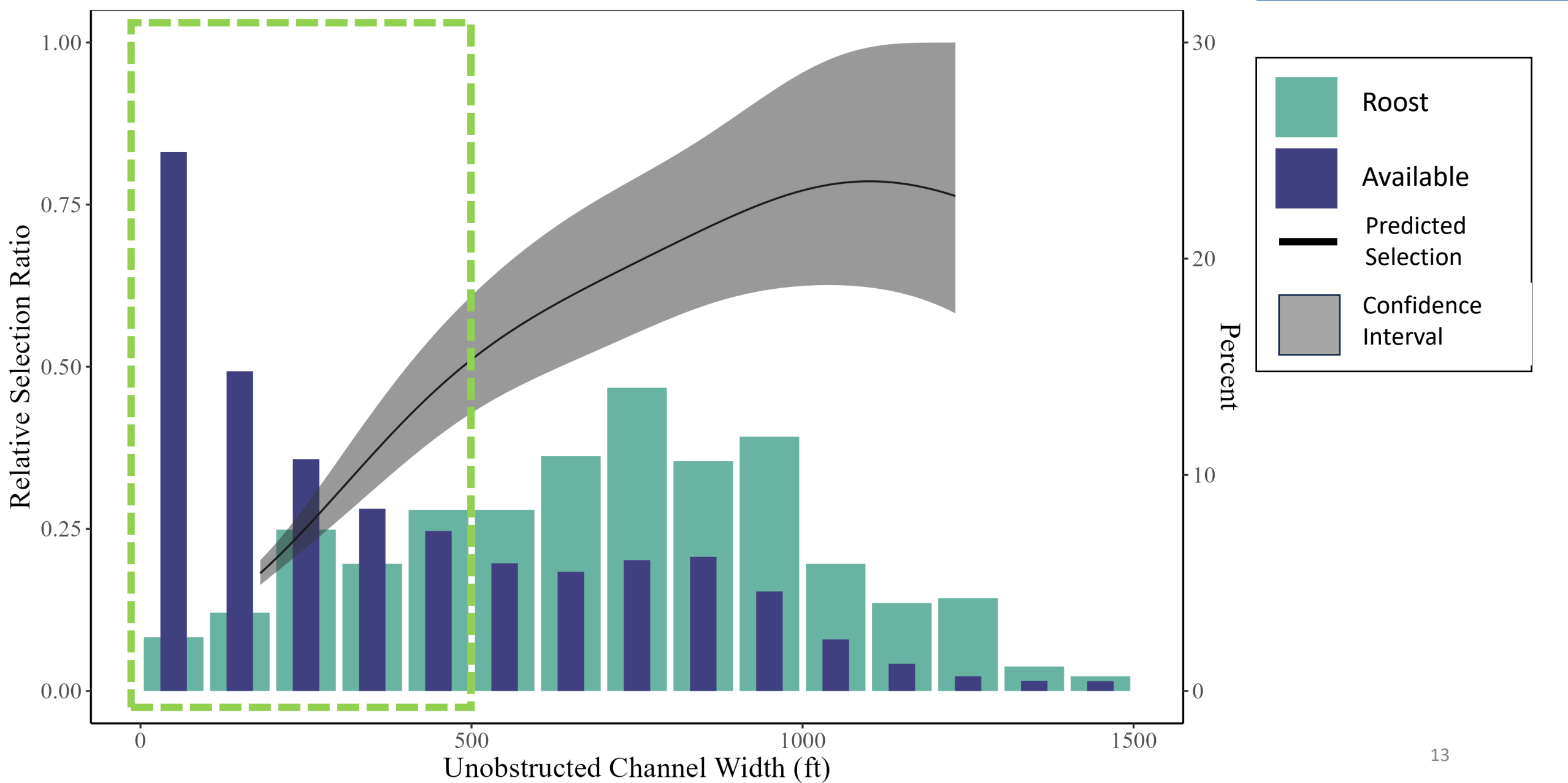


# Results: Unobstructed Channel Width

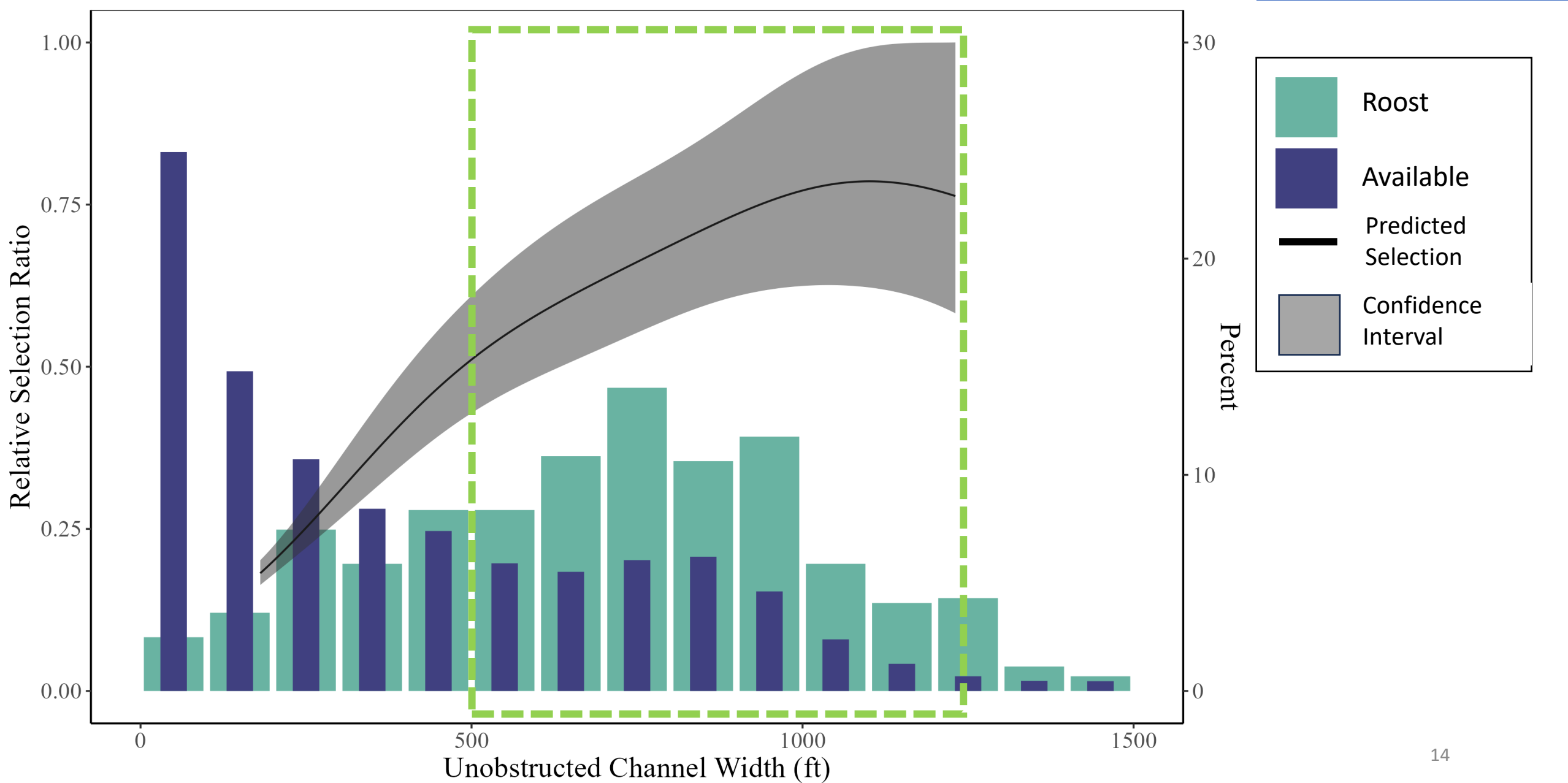




# Results: Unobstructed Channel Width



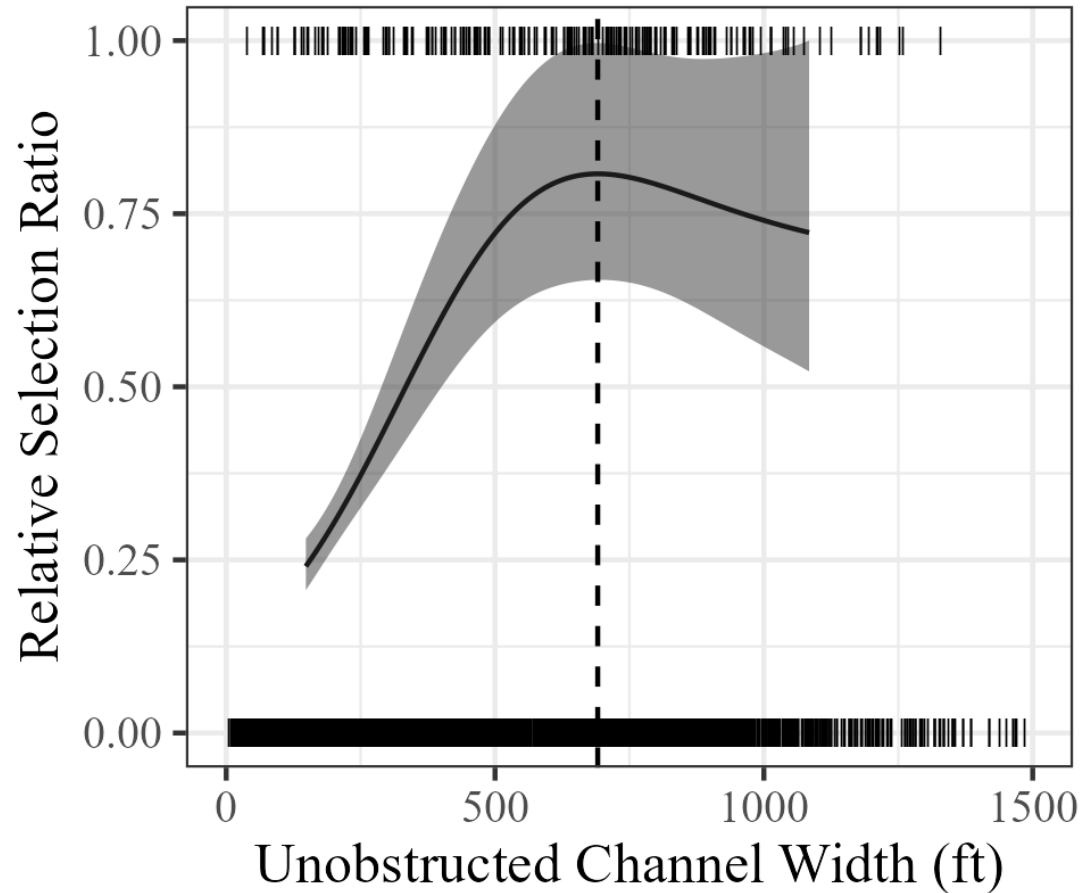
# Results: Unobstructed Channel Width



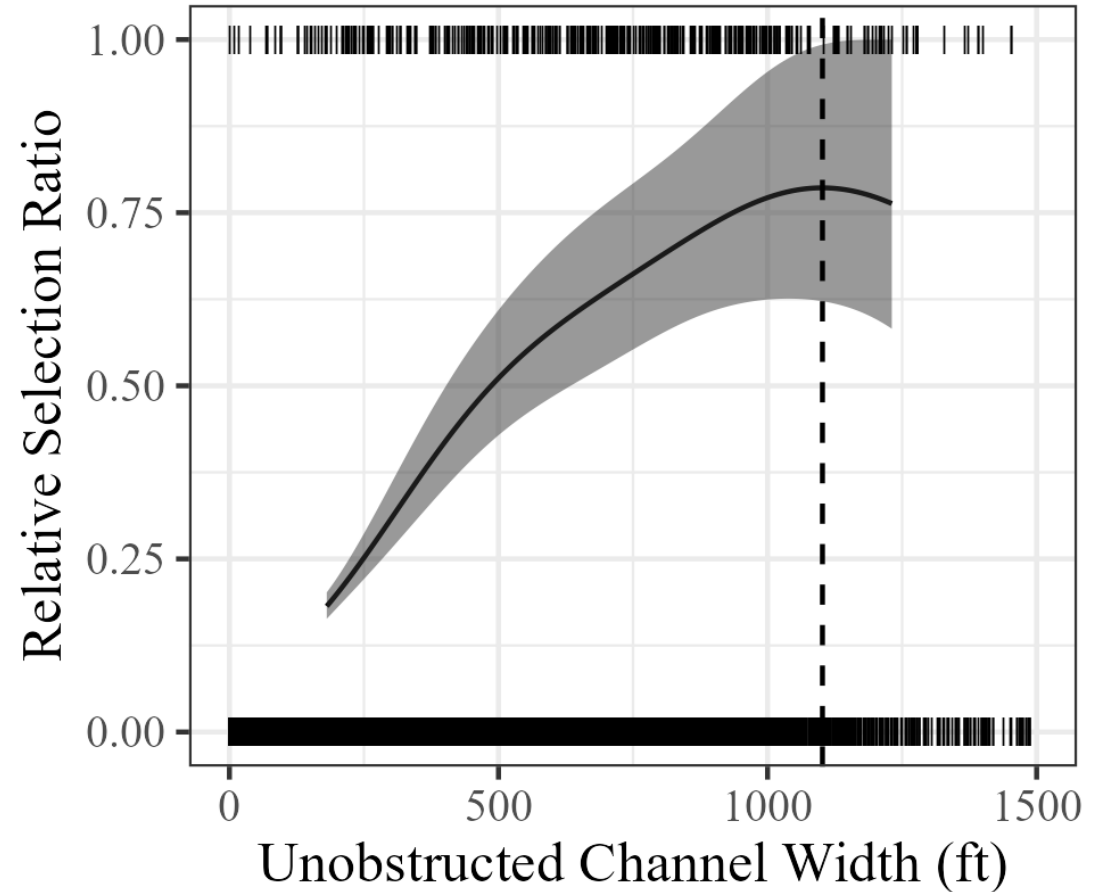


# Results: Unobstructed Channel Width

2001 - 2017

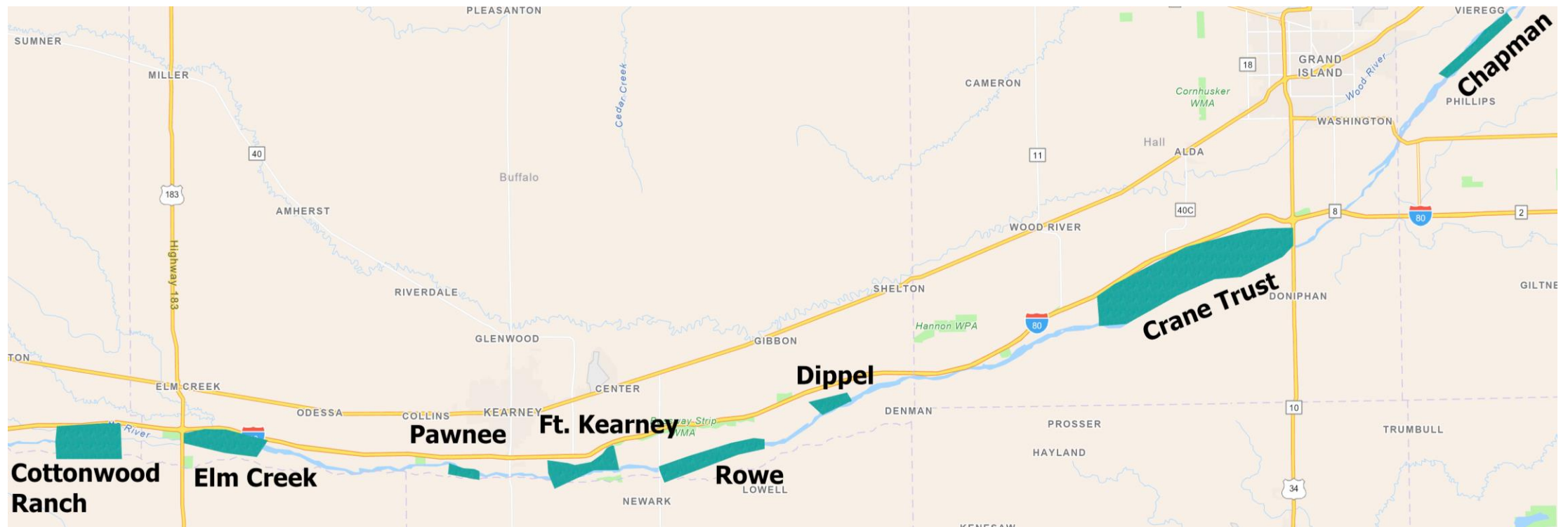


2001 - 2022



# Program Management

- No current TAC recommendation to change Habitat Criteria
- Identify opportunities and limitations to widen channels







# Questions?